



Compact Intercom System

GCI

- Easy to set up - easy to use
- One serial bus for control and digital audio
- Analog I/O and 4-wire interface
- No matrix or central units needed, no PC/SW to set up
- Up to 256 panels
- Up to 12 simultaneous connections

Brief description

The GHIELMETTI GCI compact intercom system is an easy to install and easy to use professional solution for small and mid sized intercom systems in fix of mobile installations.

The GCI offers a variety of system components and modules along with safe TDM communication technology for 12 simultaneous audio channels on a 2-wire cable.

- Easy integration in existing communications infrastructure.
- One serial bus for audio (digital) and control
- Self-configuring network (no central matrix needed)
- Bus and star topology
- Panels can be disconnected without any interference and reconnect automatically when plugged in.
- If not programmed locally the keyboard automatically loads key setup for all connected panels.

Features

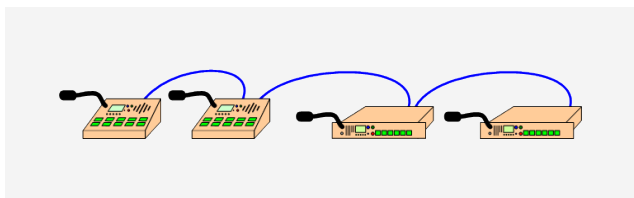
- 4-wire-interface
- GPO
- Analog In-/Outputs (XLR +6 dBu).
- Up to 256 panels
- Up to 12 simultaneous connections
- Mix of up to 6 connections in one panel
- Standard audio cable for connections (XLR)
- Local power supply or phantom power
- Keyboards with dynamic LCD for display of functionality
- No limit for number of program line inputs
- Separate volume for intercom and program line
- Maximum cable length of 500 m within one bus
- Maximum cable length of 2'000 m within one hub
- Maximum cable length of 4'000 m within one router

System Layout

Easy and fast system installation with standard audio cables. The whole system is self-configuring and automatically reconnects after any interruption.

Bus Topology

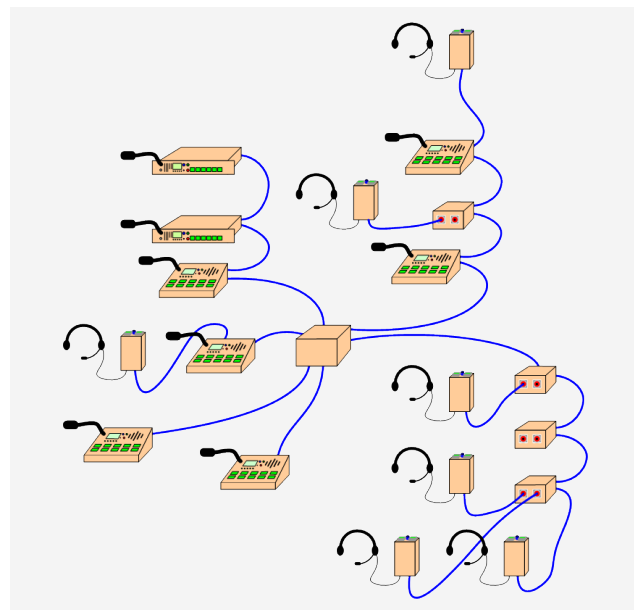
Up to 16 panels with an overall cable length of 500 m can be connected. Audio and control signals are on a standard audio cable.



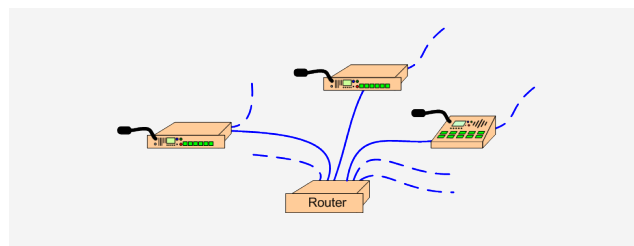
Bus topology with GCI panels

Star Topology

Up to 16 busses can be combined with hubs (GCI H2 ... H6) or routers (GCI R4 ... R16). This allows maximum number of 256 panels in one system.



Example of combined bus-/star topology with hub



Star topology with router

GCI S10 / S10 A

GCI S10
Compact Intercom - 19" Panel
678.110.300.00

GCI S10 A
Compact Intercom - 19" Panel with analog module
678.110.301.00



The GCI S10 is a compact 19"/1RU panel mit 10 LCD keys for 19" rack mount. The GCI S10 A offers an additional analog I/O module that can also be configured as 4-wire-interface.

Local configuration can be programmed directly with programming module of the panel, no PC and no special software is needed.

GCI T10

GCI T10
Compact Intercom – desktop panel
678.110.302.00



The GCI T10 is a compact desktop panel that offers exactly the same functionality as the GCI S10

GCI B2

GCI B2
Compact Intercom – Beltpack
678.110.303.00



The GCI B1 is a belt pack mit 2 LCD keys to address other panels and access the local programming of the unit. Standard headsets with dynamic microphones can be connected.

GCI SE10

GCI SE10
Compact Intercom – Keyboard extension
678.110.308.00



The GCI SE10 extends the number of keys of a GCI S10 or S10A by 10 to a total of 20 keys.

GCI R2/R4

GCI R2
Compact Intercom – Router for two subnets
678.110.306.00

GCI R4
Compact Intercom - Router for four subnets
678.110.307.00



The GCI R2 (R4) allows combination of two (four) subnets.

GCI H2

GCI H2
Compact Intercom - Hub for GCI system
678.110.304.00



With the GCI H2 additional GCI components (e.g. beltpacks GCI B2) or busses can be inserted into a bus.

The GCI components can be connected/disconnected without any impact on the running system.

GCI N1

GCI N1
Compact Intercom – phantom power supply
678.110.309.00



The GCI N1 is a power supply offering phantom power for the GCI system components (e.g. belt-packs).

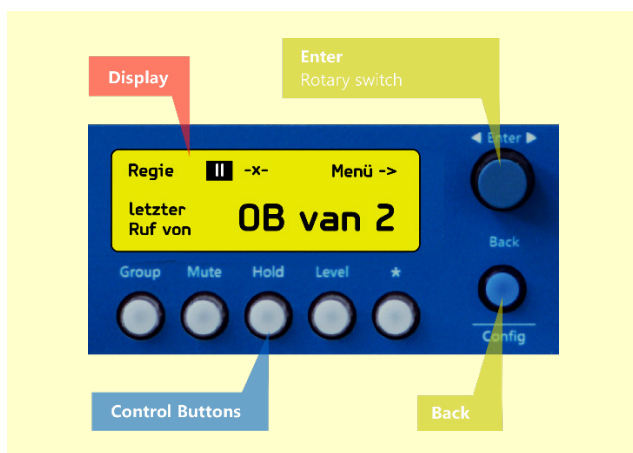
Operating elements



Programming Module

The GCI S10, S10 A and T10 offer a programming module with integrated display to access the main settings of the panels with only two rotary knobs.

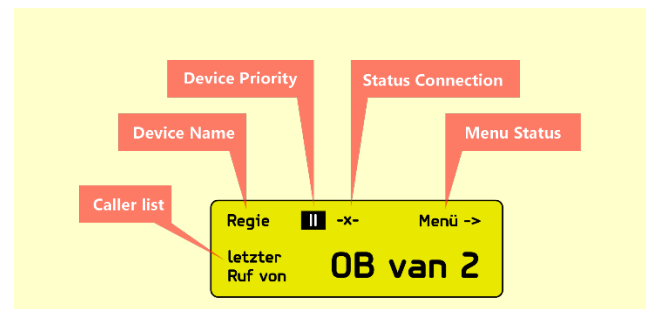
With additional control keys many functionalities can be accessed directly e.g. grouping of destinations or tempo adjustment or the input levels.



Programming module

Display

The clear display gives an overview to the most important settings e.g. the last calls, the name of the unit or various indicators.



Main display



Displays

Brief specification

GCI S10

678.110.300.00

Compact Intercom - 19" panel

Connectivity with standard audio cable (XLR)

Key panel for 10 destinations

Single call, group call and GPIO

Serial bus for control and audio

No matrix needed

No PC and software needed for set up

19"/1U

front panel blue,

GCI S10 A

678.110.301.00

Compact Intercom - 19" panel with analog module

Connectivity with standard audio cable (XLR)

Key panel for 10 destinations

Analog I/O or 4-wire interface

Single call, group call and GPIO

digital bus for control and audio

No matrix needed

No PC and software needed for set up

19"/1U

front panel blue,

GCI T10

678.110.301.00

Compact Intercom - Desktop panel

Connectivity with standard audio cable (XLR)

Key panel for 10 destinations

Single call, group call and GPIO

Digital bus for control and audio

No matrix needed

No PC and software needed for set up

19"/1U

front panel blue,

GCI B2

678.110.303.00

Compact Intercom - Beltpack

Connectivity with standard audio cable (XLR)

Key panel for 2 destinations

Single call, group call and GPIO

Digital bus for control and audio

No matrix needed

No PC and software needed for set up

Phantom powered (GCI N1 needed)

GCI H2

678.110.304.00

Compact Intercom - Hub for GCI B2

Connectivity with standard audio cable (XLR)

2 ports for GCI B2

Phantom powered (GCI N1 needed)

GCI R2

678.110.306.00

Compact Intercom - Router for 2 subnets

Connectivity with standard audio cable (XLR)

2 ports for subnets

Maximum of 16 panels per subnet

19"/1HE

GCI R4

678.110.307.00

Compact Intercom - Router for 4 subnets

Connectivity with standard audio cable (XLR)

4 ports for subnets

Maximum of 16 panels per subnet

19"/1HE

GCI SE10

678.110.308.00

Compact Intercom - Keyboard extension

Keypanel for 10 destinations

19"/1HE

GCI N1

678.110.309.00

Compact Intercom - Power supply

Phantom power supply for GCI B2

Phantom power supply for GCI H2

GHIELMETTI

SWITZERLAND GHIELMETTI AG Head Office Switzerland +41 32 671 13 13 (Phone) +41 32 671 13 14 (Fax) info@ghielmetti.ch www.ghielmetti.ch	GERMANY GHIELMETTI AG Office Germany +49 3371 402 754 (Phone) +49 3371 610 548 (Fax) deutschland@ghielmetti.ch www.ghielmetti.ch			
GHIELMETTI offices				